



# Italy: present challenges and past perspectives

What can the archives show us about climate change, agriculture, and immigration?

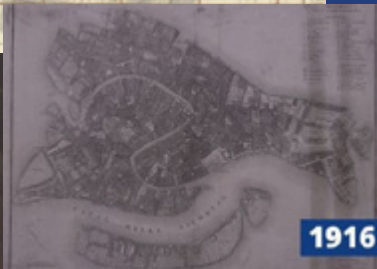
# The impact of climate change

Shifting weather patterns and rising sea levels are impacting key sectors of Italy's economy, including agriculture and tourism. The summer of 2024 saw record-breaking heat, with temperatures surpassing 40°C in some regions. Looking ahead, a high-carbon future poses serious risks to the country's coastline, water resources, forests, and more.

## WHAT RESOURCES CAN RESEARCHERS FIND ON WILEY DIGITAL ARCHIVES?



1812



1916

Various city plans of Venice show the area's vulnerability to rising sea levels and flooding. While the region has always experienced acqua alta events, they have become more frequent, and more severe.

Nuova Pianta della città e Porto franco di Venezia  
*Map, Europe, Div. South*, [1812].  
Pianta della Città di Venezia, *Map, Europe, Div. South*, 1916.  
Source: *Royal Geographical Society (with IBG)*



"The Italian and UK cooperation on problems of human environment" outlines concerns and potential solutions as they pertain to water problems, nature preservation, and biological effects of pollution.

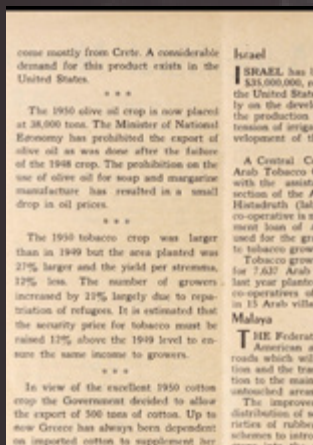
UK/Italy co-operation on environmental pollution  
The Director, R. Arculus, et al., *The National Archives, London, England, Foreign Office and Foreign and Commonwealth Office*. Source: *Environmental Science and History*

[READ MORE WITH A FREE TRIAL](#)

# Different ways forward for agriculture

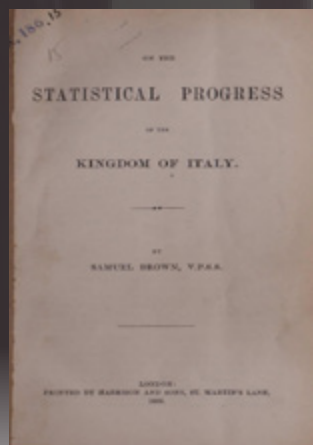
Changing weather patterns, rising temperatures, and extreme storms are threatening agriculture in Italy, one of Europe's leading producers. Key crops like olives, grapes, wheat, and maize are struggling, increasing the need for drought- and heat-resistant alternatives such as millet and sorghum. As climate change advances, the future of Italian farming will require adaptation and shifted approaches.

## WHAT RESOURCES CAN RESEARCHERS FIND ON WILEY DIGITAL ARCHIVES?



Committee of Agriculture notes discuss olive yields and a 1948 prohibition to export. Part of the restrictions prevented the use of olive oil in soaps and margarines to keep prices stable. Wine exports are also mentioned, among other agricultural updates.

Committee on Agriculture, L. Lord, *The National Archives (...)*, 1943-1951  
Source: *Environmental Science and History*



1866 statistics on Italy's progress include the average annual production of staples including olive oils and grain. The pamphlet expresses that, with proper agricultural machinery, Italy could become self sufficient and a great exporter.

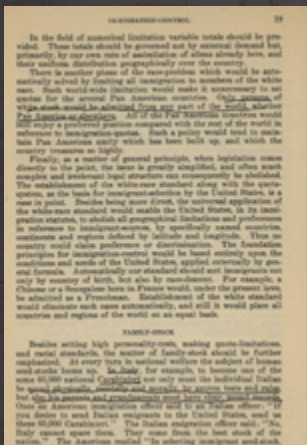
On the Statistical Progress of the Kingdom of Italy, Samuel Brown, *Pamphlets*, 1866.  
Source: *Royal Geographical Society (with IBG)*

**READ MORE WITH A FREE TRIAL**

# A look at asylum and immigration

Italy has long been a country of emigration popular to America and other parts of the world, but in recent decades the trend has changed, now attracting a wealth of immigrants into its workforce. The shift has helped to address labor shortages in the region, steering the country's economy.

## WHAT RESOURCES CAN RESEARCHERS FIND ON WILEY DIGITAL ARCHIVES?



New York Chamber of Commerce documents provide a 1934 perspective on immigration standards and enforcement. Italy is drawn upon for the sake of comparison, with mention of the Carabinieri, the influence of propoganda, and Italian emigration to the United States.

A report of the special committee on immigration and alien insane, Harry H. Laughlin, *Sir Arthur Keith Collection*, 1934. Source: *The Royal Anthropological Institute of Great Britain and Ireland*



A series of classical maps outline Grecian and Roman chronology dating back to 1184 B.C. Included are migration patterns, such as the over ruling of a proposed migration to Veii from the Ruins of Rome after the Battle of Allia in 390 B.C.

First Classical maps, with chronological tables of Grecian and Roman history... with an appendix of map and chronological tables for sacred history *Atlases, World*, 1847. Source: *Royal Geographical Society (with IBG)*

**READ MORE WITH A FREE TRIAL**